

dico



CONCEPT

**From Latin *dīcō***

*dīcis, dīxi, dictum, dīcĕre*

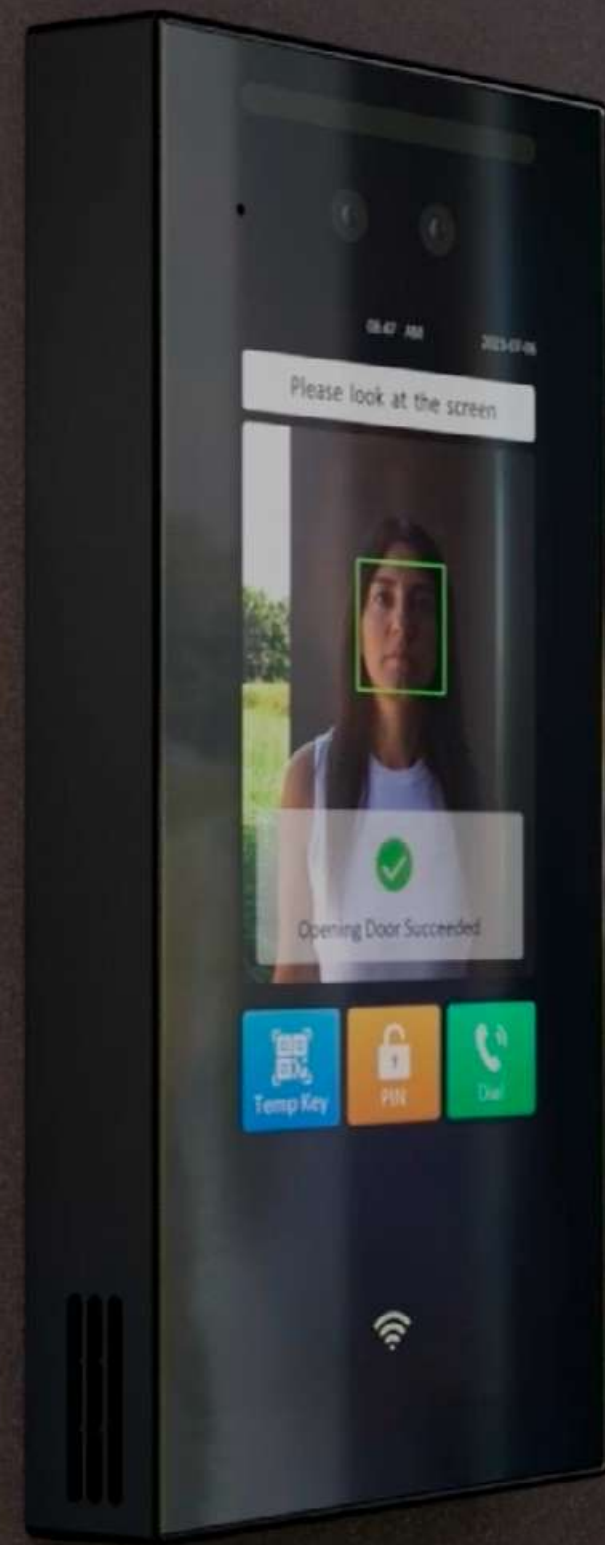
To say, pronounce, call, show, indicate..

Thanks to its clean, essential design and metallic finish,  
it responds to the family feeling of the other product lines.

DICO, combined with the DELÉGO supervisor, goes beyond the definition  
of a video door phone and ranks among the indispensable features of contemporary buildings.

Security, reliability and versatility are fundamental requirements  
for an object with state-of-the-art technical features.





# OPEN THE DOORS TO THE FUTURE

With a sleek design and extreme ease of use, the DICO door phone leverages a wide range of cutting-edge technologies for intelligent building access and home control



# EASY TO USE AND INSTALL

Dico is an IP-based outdoor door phone based on the SIP standard. It is fully integrated with the Delégo supervision system and can operate completely autonomously within the home network.

It is a fully touchscreen product, and thanks to integration with the Ekinex cloud and the Delégo app, you can receive video calls wherever you are (function available in Q1 2024).



A modern, two-story house with a dark brick exterior and large glass windows. A swimming pool is in the foreground, surrounded by a wooden deck and a lawn. The sky is blue with some clouds.

*Application areas*

# RESIDENTIAL

Using state-of-the-art technology, the DICO intelligent video door entry solution meets the security, convenience and computerisation requirements of the modern residential sector.





*Application areas*

# HO.RE.CA

The Ho.re.ca sector represents one of the most important branches of the hotel and restaurant industry.

The DICO video intercom system simplifies things for both operators and customers by combining security, room control and communication in one system.





*Application areas*

# TERTIARY

As we enter the AIoT era, many existing door entry systems are failing to meet the increasing security and convenience needs of residents.

The DICO video door entry solution is perfect for upgrading obsolete systems through the existing infrastructure.





*Application areas*

# MULTI-TENANT

To meet the needs of businesses, such as improving productivity and resource efficiency, intelligent Intercom solutions have come into play, combining voice, video, security, access control and much more.





## MULTIPLE ACCESS CONTROL MANAGEMENT

*Multiple access control management*

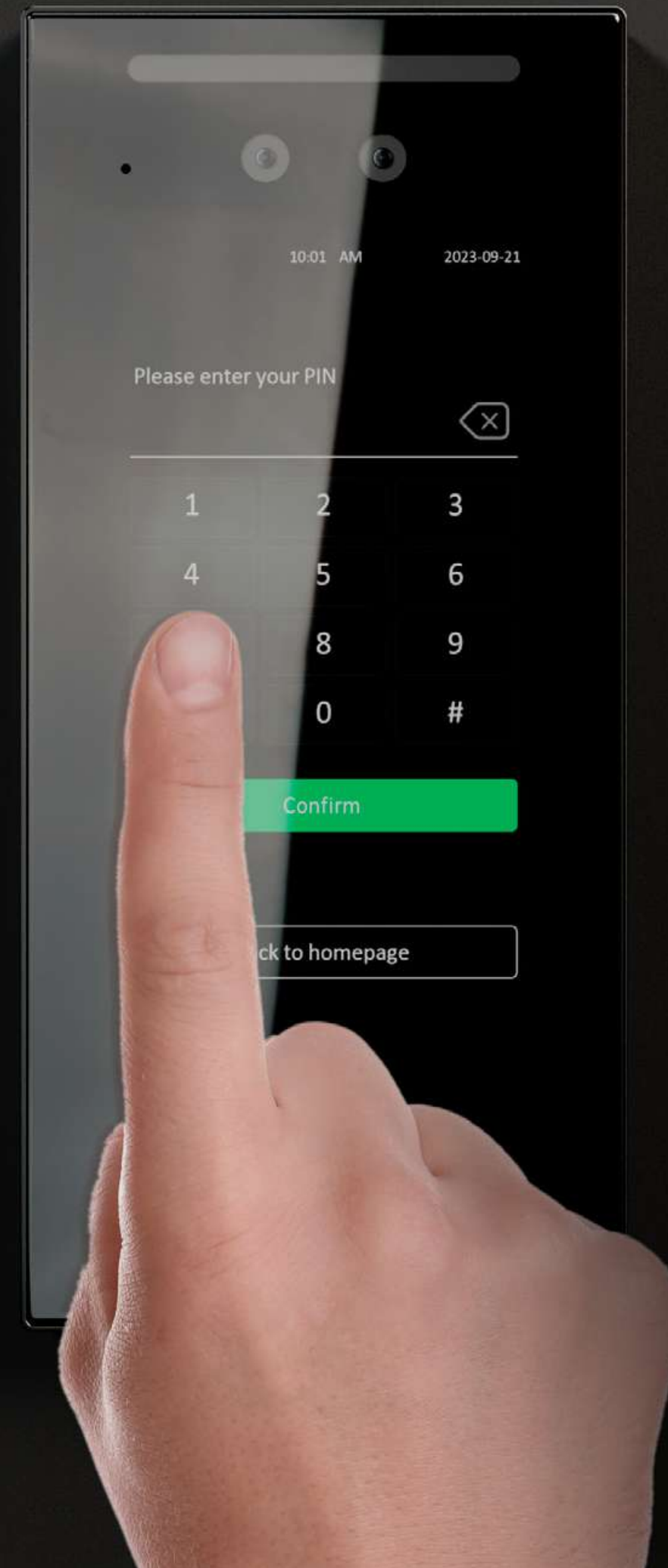
# FACIAL RECOGNITION

DICO integrates a powerful facial recognition system, based on biometric data stored within the device (no cloud calls). Biometric profiles are anonymised in full compliance with privacy and GDPR directives. Faces can be stored by uploading a simple photo to the local configuration web interface, or through a learning procedure.

When a face is recognised, DICO can close its integrated relay, and also send a request to Delégo to perform other operations such as KNX auxiliary commands or scenarios.







*Multiple access control management*

# VIRTUAL KEYBOARD

DICO allows access to controlled accesses by entering a numerical PIN code, directly on the display.

In the future, it may be integrated into the MyWay access control system on Delégo.



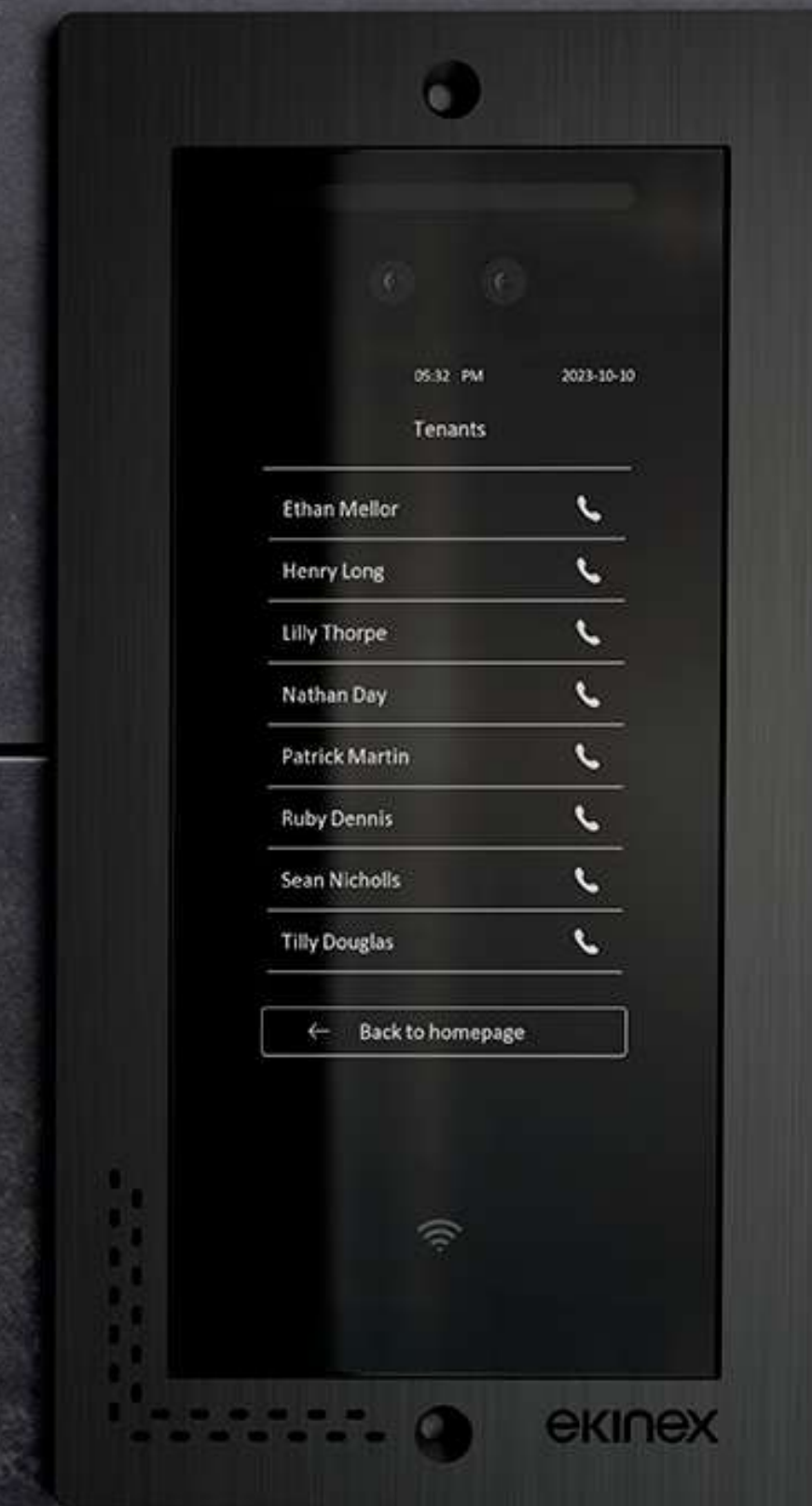
*Multiple access control management*

# MULTI-APARTMENT AND MULTI-TENANT MANAGEMENT

The Dico video door entry system lends itself perfectly to multi-apartment residential building management, even of large size, as well as tertiary and multi-tenant installations. The graphic interface can be customised to display:

- The direct list of tenants (in flat mode), typically used in apartment buildings.
- The list of companies, with a sub-page dedicated to the interiors of each company, typically used in multi-tenant buildings.

The optional screen saver mode can display e.g. a static logo, individual company logos in rotation or the building address. When a face is recognised, DICO can close its integrated relay, and also send a request to Delégo to perform other operations such as KNX auxiliary commands or scenarios.







*Multiple access control management*

## QR CODE READING

DICO can also enable access via a previously generated and authorised QR code. In this way, it is possible to conveniently grant access for a certain period to occasional guests, without the need to store their biometric data and/or share their code numbers.



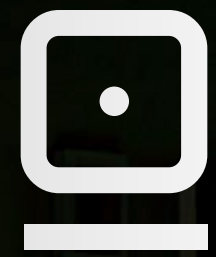
*Multiple access control management*

# NFC TECHNOLOGY

DICO can also enable access via RFID cards or 13.56 MHz proximity cards. In the future, this function may be integrated into the MyWay access control system on Delégo.







# MAIN FEATURES



# IP DOOR PHONE 5"

Many functions in one device; DICO is not just a simple door phone. The innovative touch screen compared to market standards allows a very high flexibility of configuration and can be wall-mounted or flush-mounted using the special cover with mounting box.





# INTEGRATION WITH DELÉGO

DICO integrates seamlessly with the Delégo Supervision system, allowing you to interact with the various functions directly within the App, available for both 4", 5", 8", 10" wall touch panels and mobile devices.

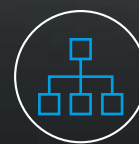




# MAIN FEATURES

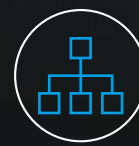
## Power supply

POE power supply  
or 12Vdc



## Interfaces

1 door-opening relay  
1 input



## Storage memory

Facial recognition images: 20,000  
ID card codes: 20,000



## Camera

2MP dual-lens camera  
WDR



## Display

Display 5" LCD  
Touch screen  
Resolution 1280 x 720 px



## Card reader

13.56 MHz and NFC





# VERSIONS



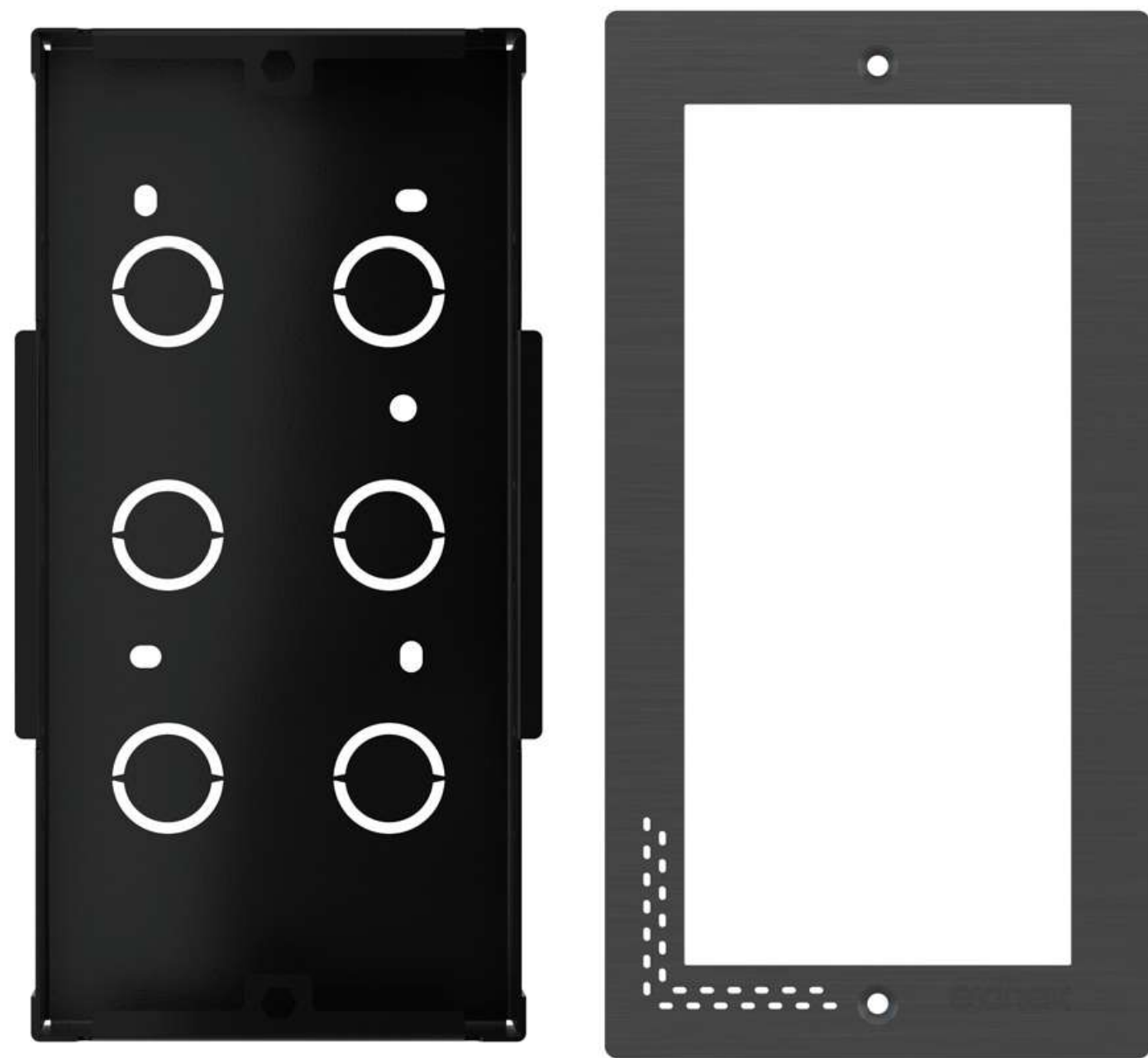
## **EK-5DP-VI**

The EK-5DP-VI is a secure and affordable commercial-grade device for both intercom and access control.

With the latest deep learning algorithm and dual camera motion detection technology, the EK-5DP-VI can be used for residential and commercial applications for the realisation of intelligent access control.



# ACCESSORIES



**EK-5IW-VI**  
Box and frame  
for flush mounting.



**EK-5RC-VI**  
Rain  
cover

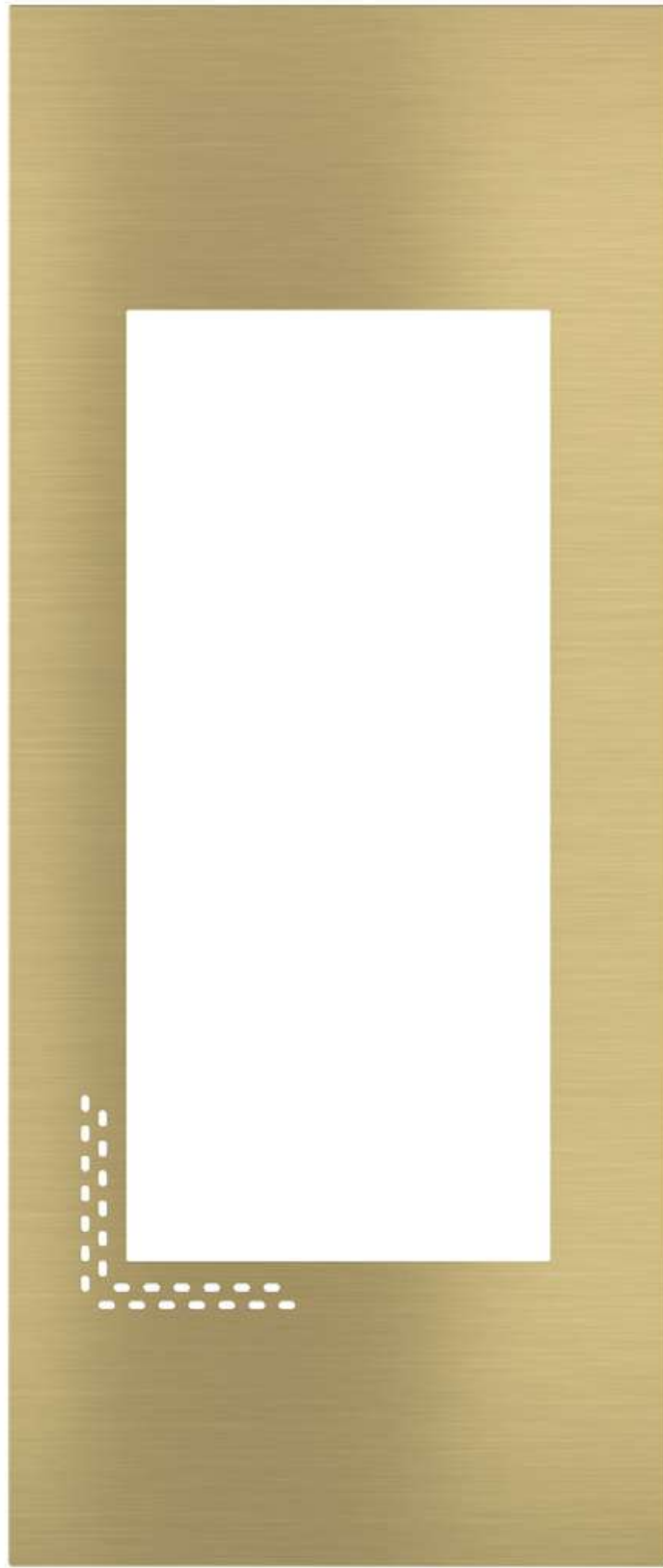
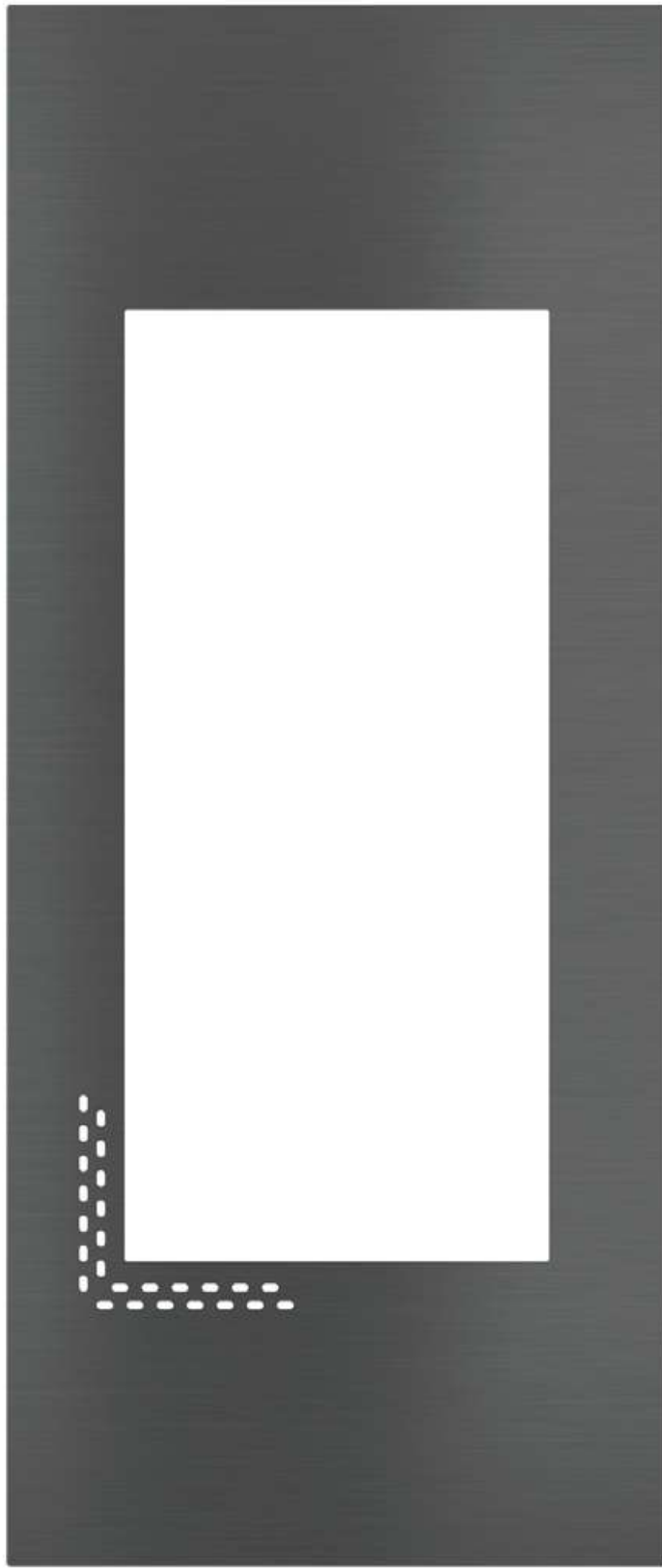
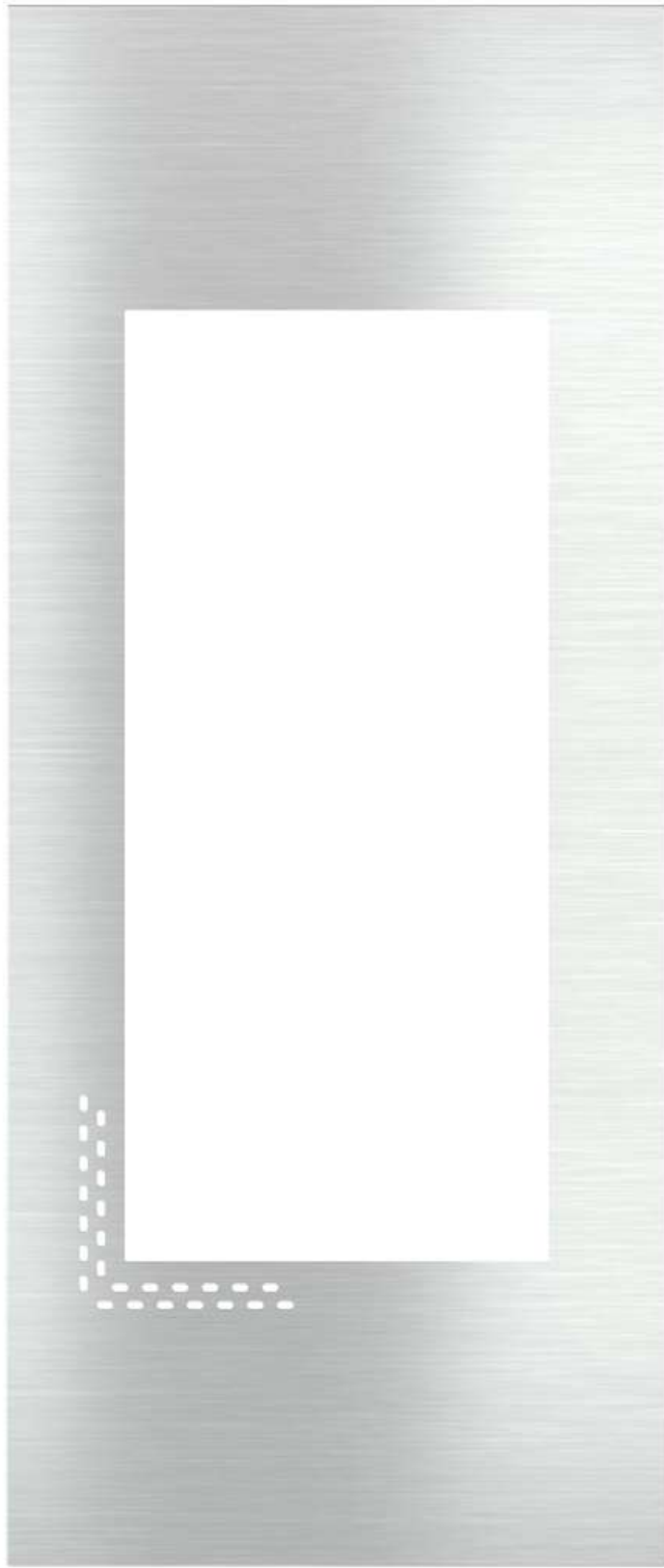


**EK-SR1-VI**  
Security  
Relay



# FRAMES

COMING SOON



**Frame (130 x 310 mm)**  
White

**Frame (130 x 310 mm)**  
Brushed aluminium (GBQ)

**Frame (130 x 310 mm)**  
Brushed carbon (GBU)

**Frame (130 x 310 mm)**  
Brushed brass (GBB)











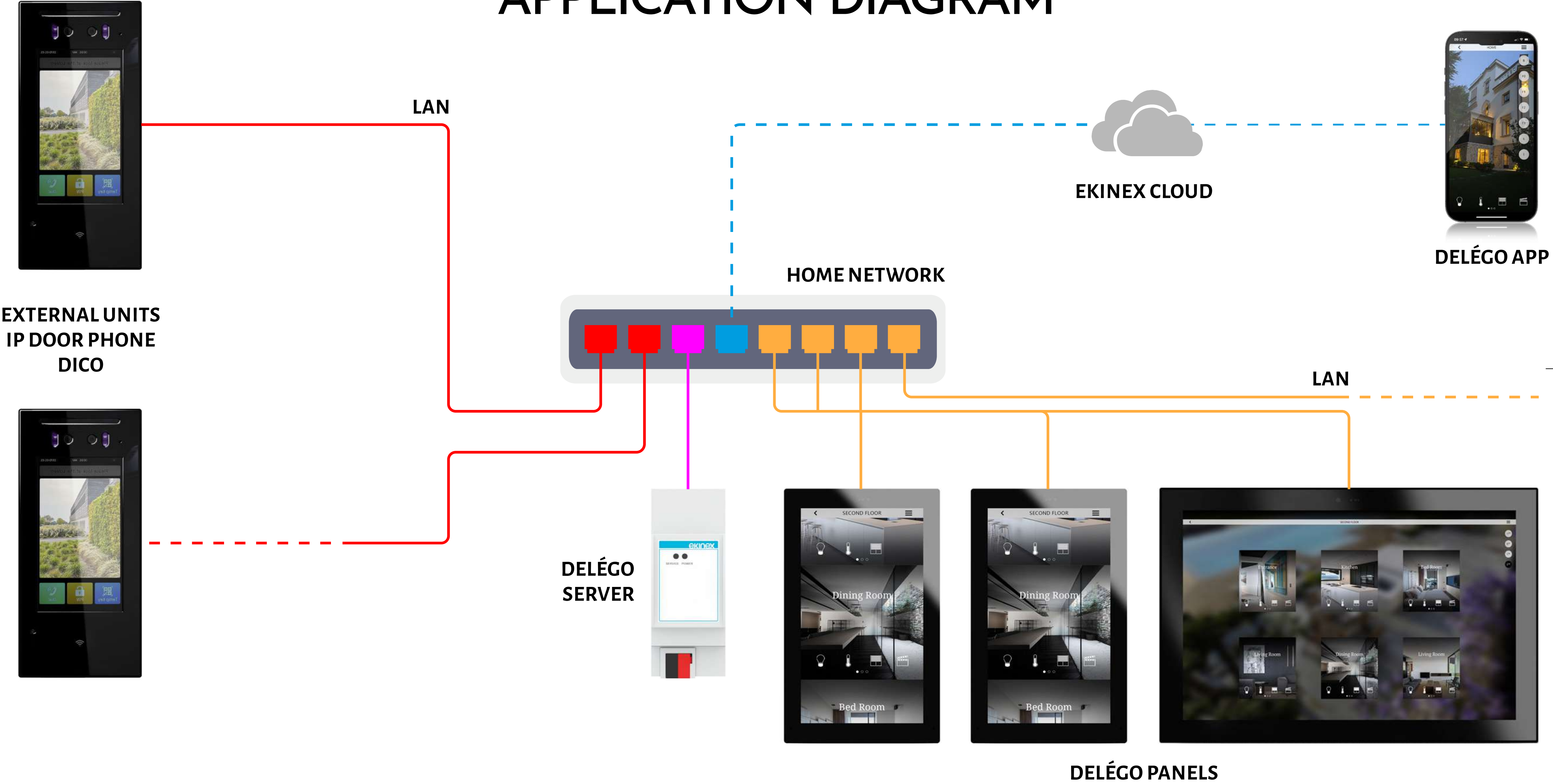








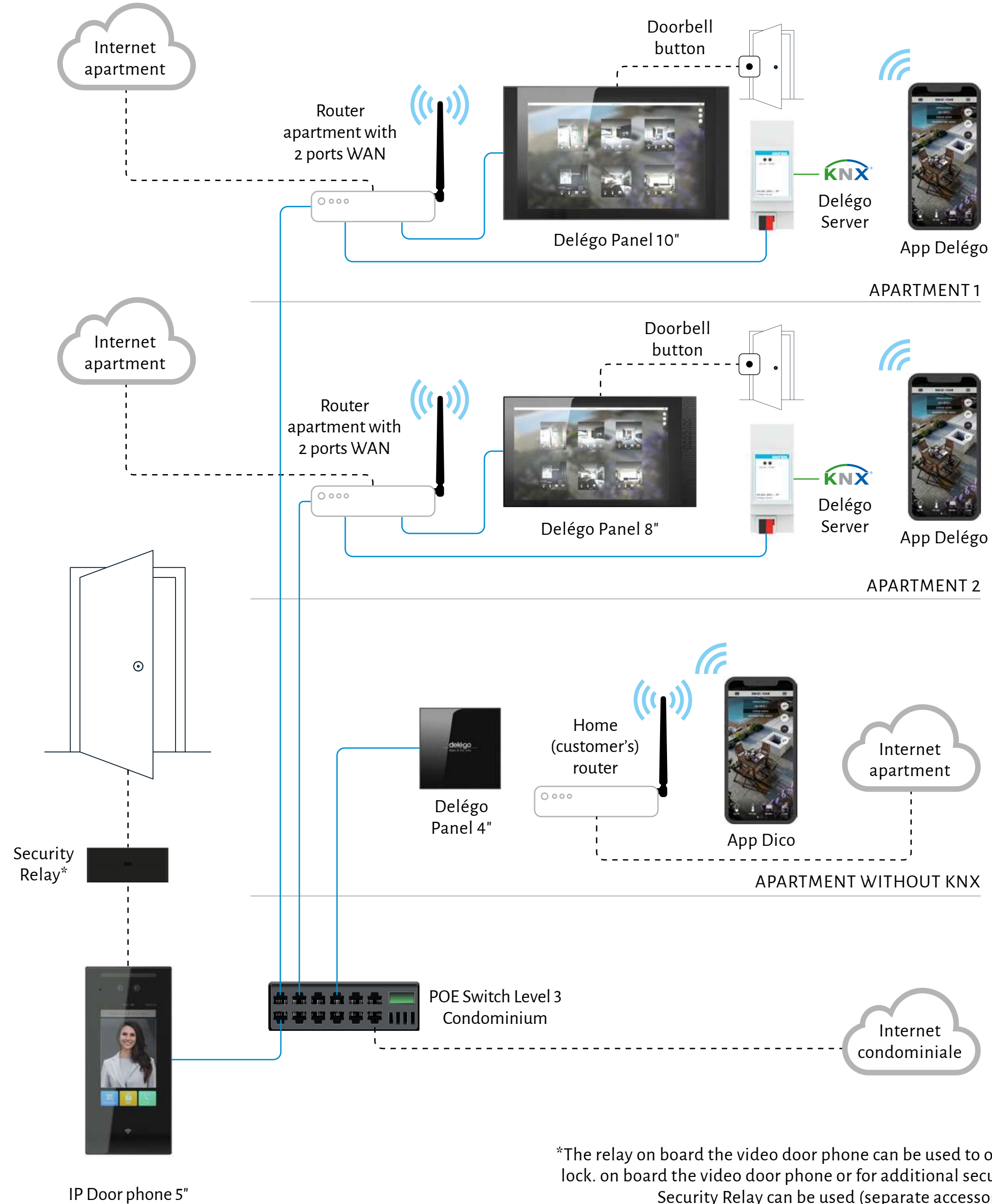
# APPLICATION DIAGRAM





— KNX  
— LAN  
- - - Other connection

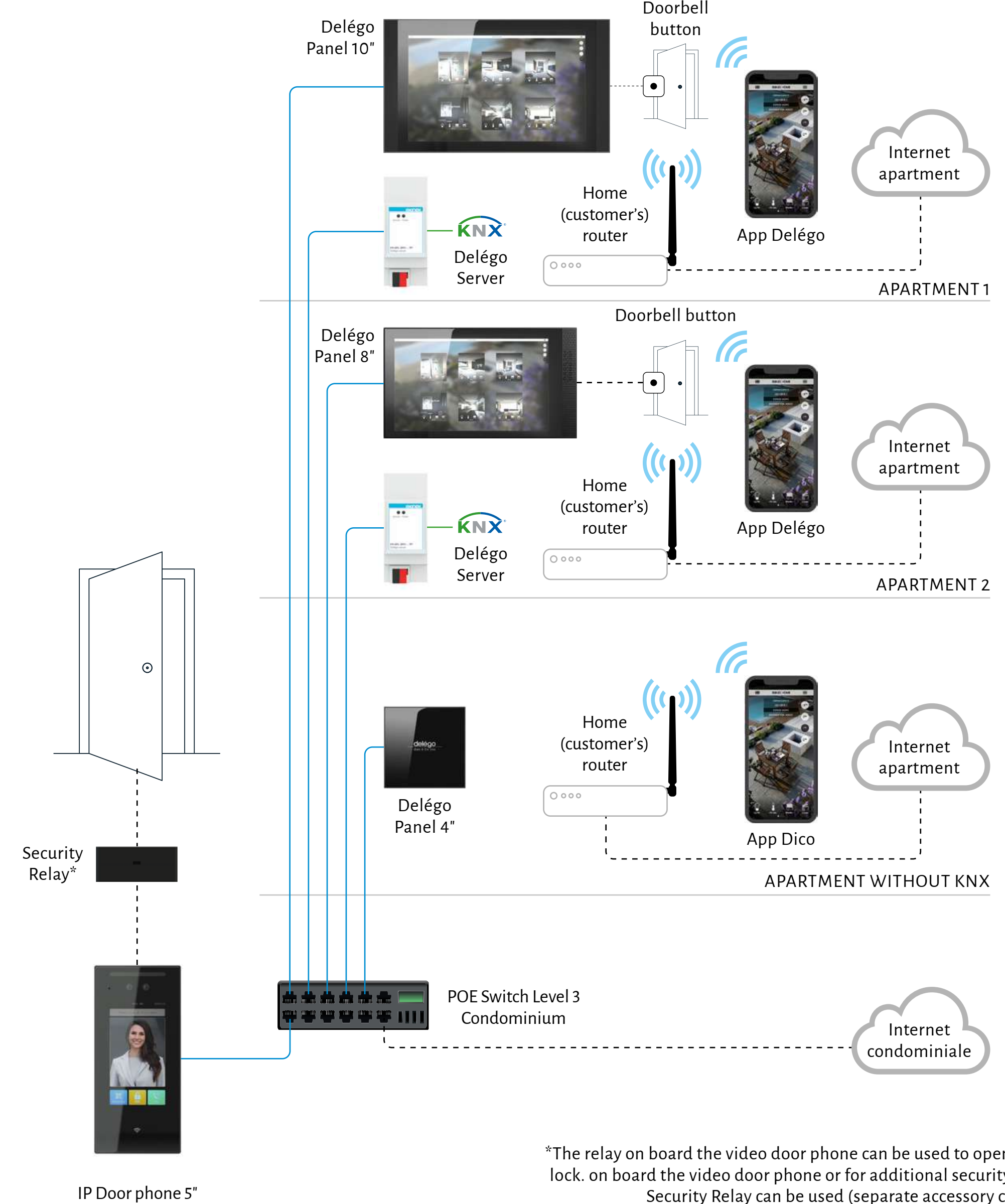
## Connection diagram Dico IP Video Door Phone with KNX and Delégo (option 1)



\*The relay on board the video door phone can be used to open the lock. on board the video door phone or for additional security the Security Relay can be used (separate accessory code)

— KNX  
— LAN  
- - - Other connection

## Connection diagram Dico IP Video Door Phone with KNX and Delégo (option 2)



\*The relay on board the video door phone can be used to open the lock. on board the video door phone or for additional security the Security Relay can be used (separate accessory code)



TABLE  
OVERVIEW  
FEATURES

5" IPS LCD touch screen display with 1280 x 720 pixel resolution and 2M pixel dual-lens camera, WDR
1 INPUT CONTACT
Ethernet port RJ45, 10/100Mbps adaptive
Power supply 802.3af Power-over-Ethernet
12 Vdc power supply (if not using PoE)
Max. current consumption 380 mA
Tamper supported
IP65 PROTECTION
Access control: mobile app, facial recognition, NFC, QR codes, PIN codes, RFID Card 13.56mhz
1 OUTPUT RELAY FOR DOOR OPENER
INPUT / OUTPUT RELAYS: 1 / 1
Facial recognition
Dual camera with anti-spoofing algorithm against photo and video forgery
Storage of up to 20,000 images and 20,000 cards
Facial recognition speed of less than 0.2 seconds/user
Facial recognition accuracy rate of over 99.7%
Allows audio and video communication with an IP phone, Delégo App or Delégo Panel via SIP standard
Configuration via web browser
Customisable touch user interface
Excellent voice intelligibility in all situations, even noisy ones
Same product for wall and flush mounting
Space-saving 5" design perfect for narrow door frames

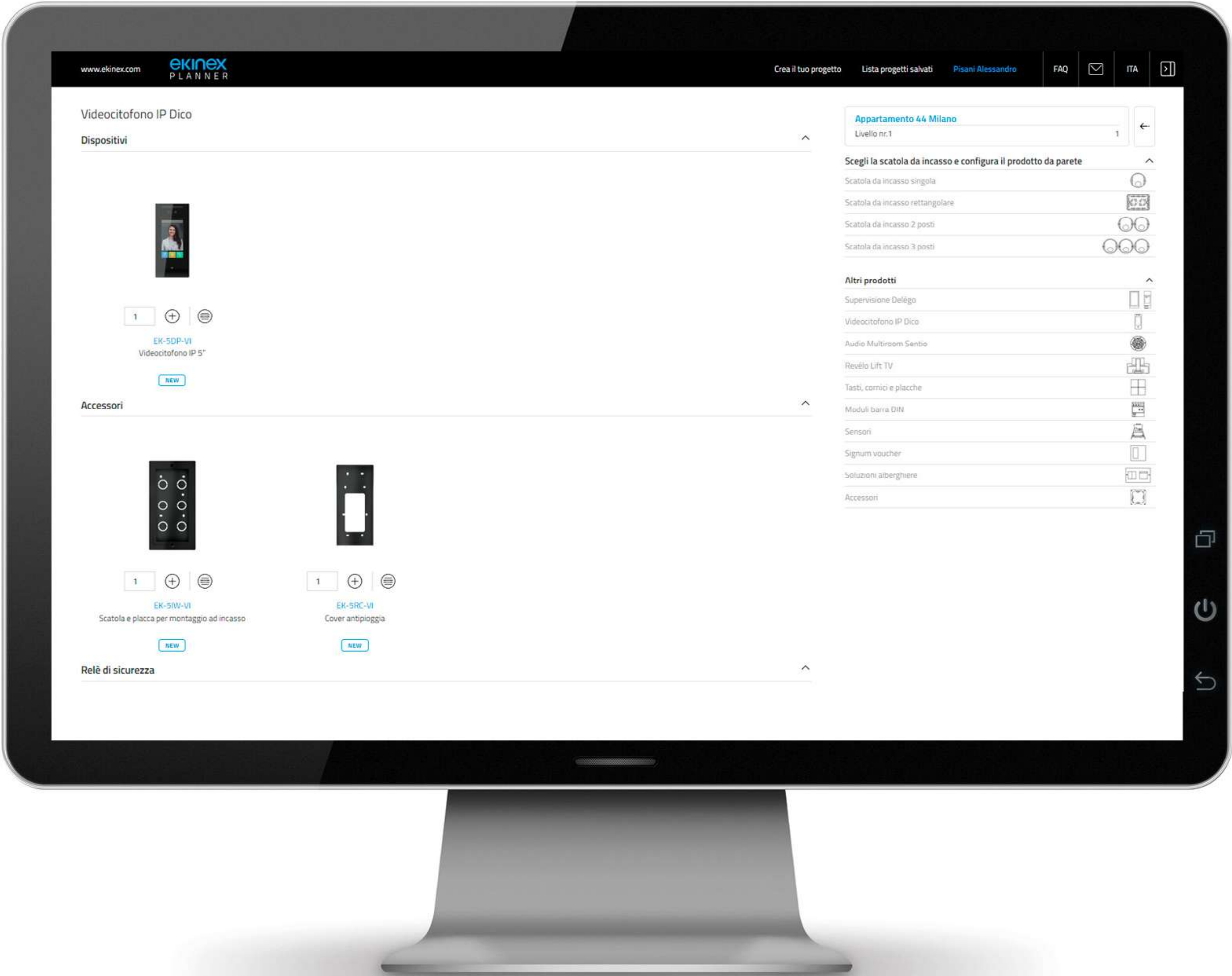






Through the Ekinex configurator, each element can be customised and inserted into your project up to the generation of a quotation request that is sent to the sales team together with the details of the chosen products.

**planner.ekinex.com**







**Ekinex S.p.A.**

Via Novara, 37

I-28010 Vaprio d'Agogna NO

T +39 0321 1828980

[info@ekinex.com](mailto:info@ekinex.com)

[www.ekinex.com](http://www.ekinex.com)